

Cello

# TRIPLE PLAY

$\text{♩} = 120 - 126$

Handwritten musical score for Cello, titled "TRIPLE PLAY". The score is in 4/4 time with a tempo of 120-126 bpm. The notation includes various dynamics (ff, f, <), articulations (arco, pizz.), and a key signature change from one flat to no flats at measure 15. The piece ends with a double bar line at measure 28.

Measures 1-4: *arco*, *ff*, *pizz.*

Measures 5-7: *f*, *arco*, *pizz.*

Measures 8-12: *f*, *ff*

Measures 13-15: *f*

Measures 16-18: *arco*, *ff*, *pizz.*, *f*

Measures 19-21: *f*

Measures 22-24: *arco*, *f*, *<*, *f*

Measures 25-27: *pizz.*, *f*

Measures 28-30: *f*

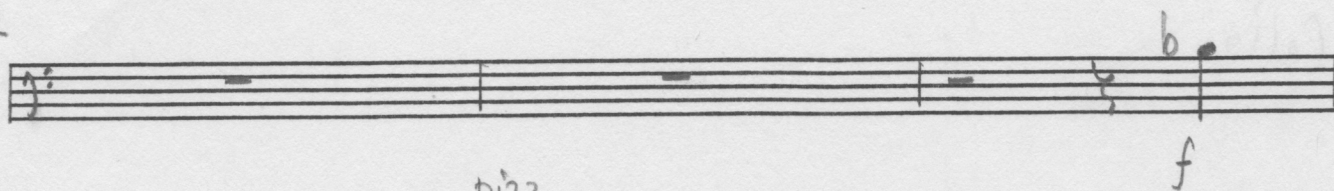
Handwritten musical score on ten staves, numbered 31, 34, 37, 40, 43, 46, 49, 53, 56, and 59. The notation includes various musical symbols such as notes, rests, beams, and dynamic markings.

Key markings and annotations include:

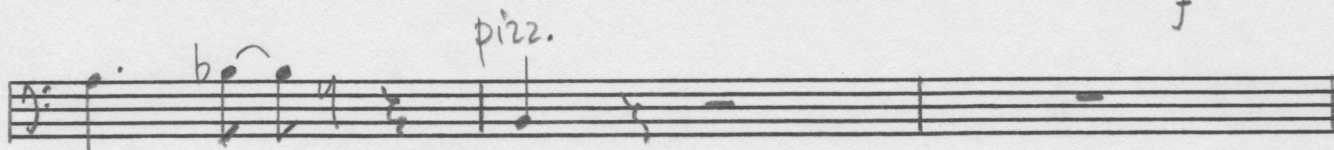
- 31:** *pizz.*, *f*, *#*
- 34:** *f*
- 37:** *arco*, *f*
- 40:** *f*, *#*
- 43:** *f*, *ff*, *f*
- 46:** *pizz.*
- 49:** *arco*, *pp < p*, *ff > p*, *f*
- 53:**
- 56:** *pizz.*, *mf*, *arco*
- 59:** *f*, *♩ = ca. 90*



62



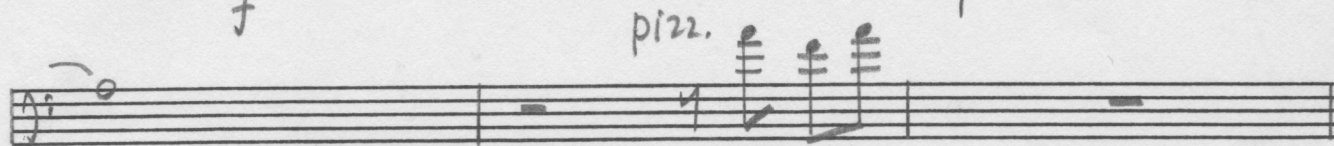
65



68



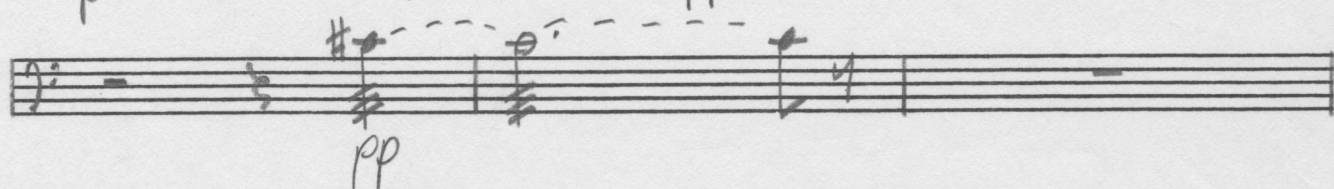
71



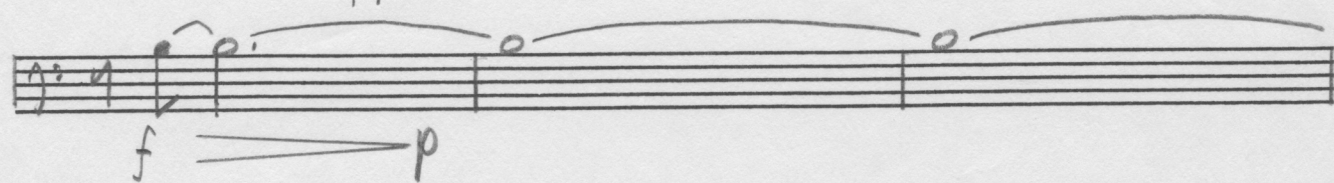
74



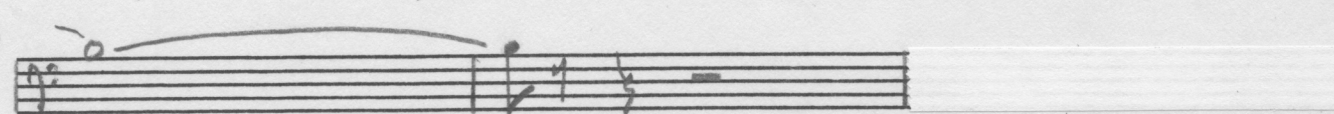
77



80



83



meno mosso (majestic)

85 pizz. mf f f

89 mf f b $\flat$

92 > ff pizz. ♪ = ca. 90

95 b $\flat$  ff b $\flat$

98 "romantically" arco b $\flat$  pizz. f arco b $\flat$

101

104 dim. ♪ = ca. 120 mf pizz. ff

107 ♪ = ca. 90

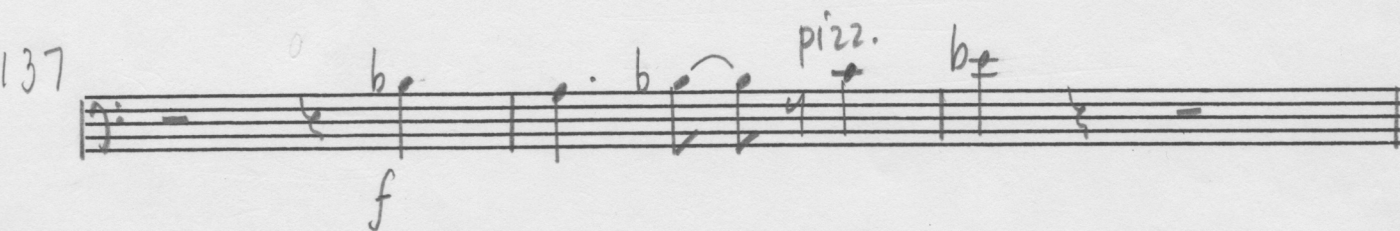
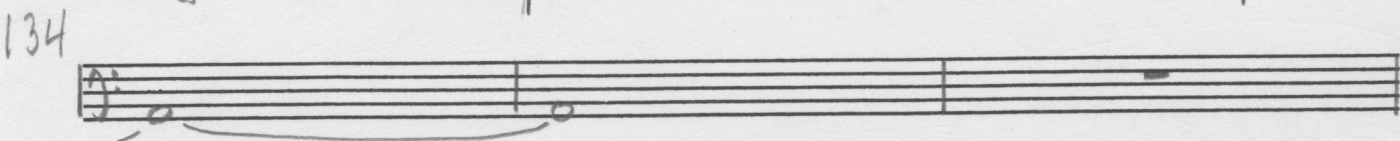
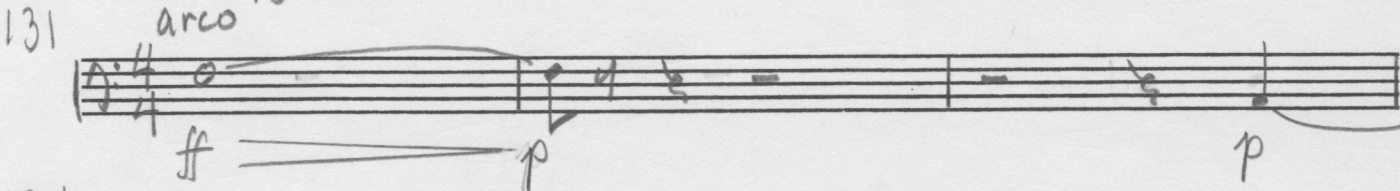
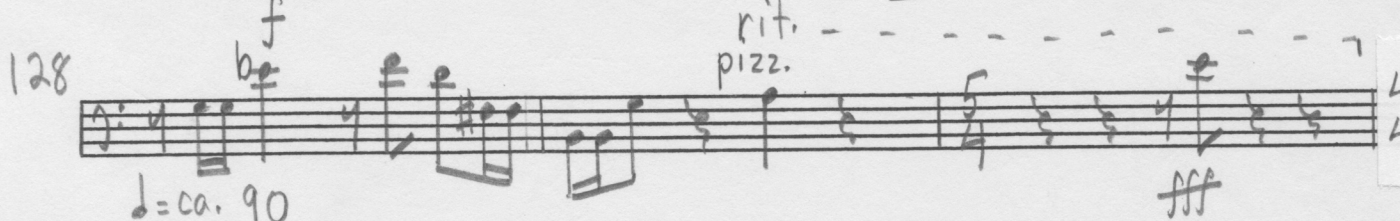
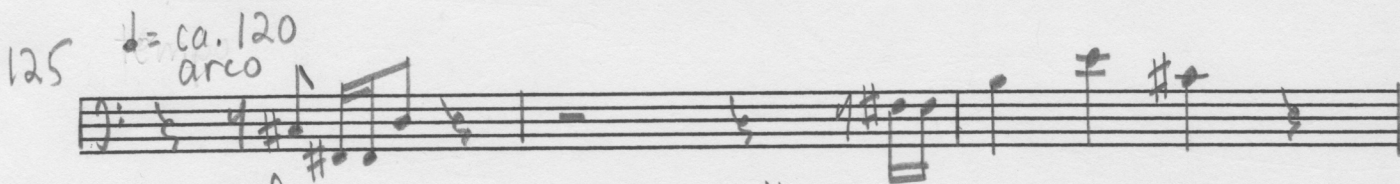
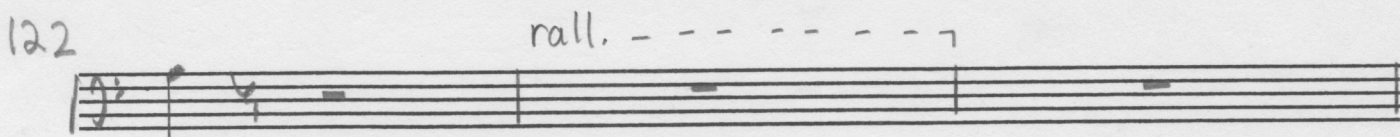
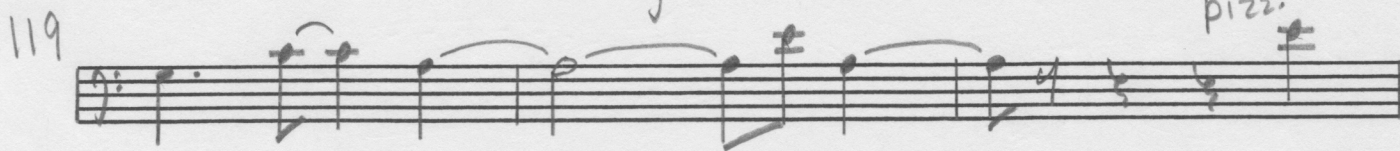
110 arco b $\flat$  ♪ = ca. 120 fpp

113 f



meno mosso (majestic)

5



$\text{♩} = \text{ca. } 120$ 

140

pizz.

*f*

143

meno mosso

146

arco

pizz.

*f*

149

 $\text{♩} = \text{ca. } 120$ 

152

 $\text{♩} = \text{ca. } 90$ 

arco

155

*ff*

piu mosso

158

*sf*

161

*fff*